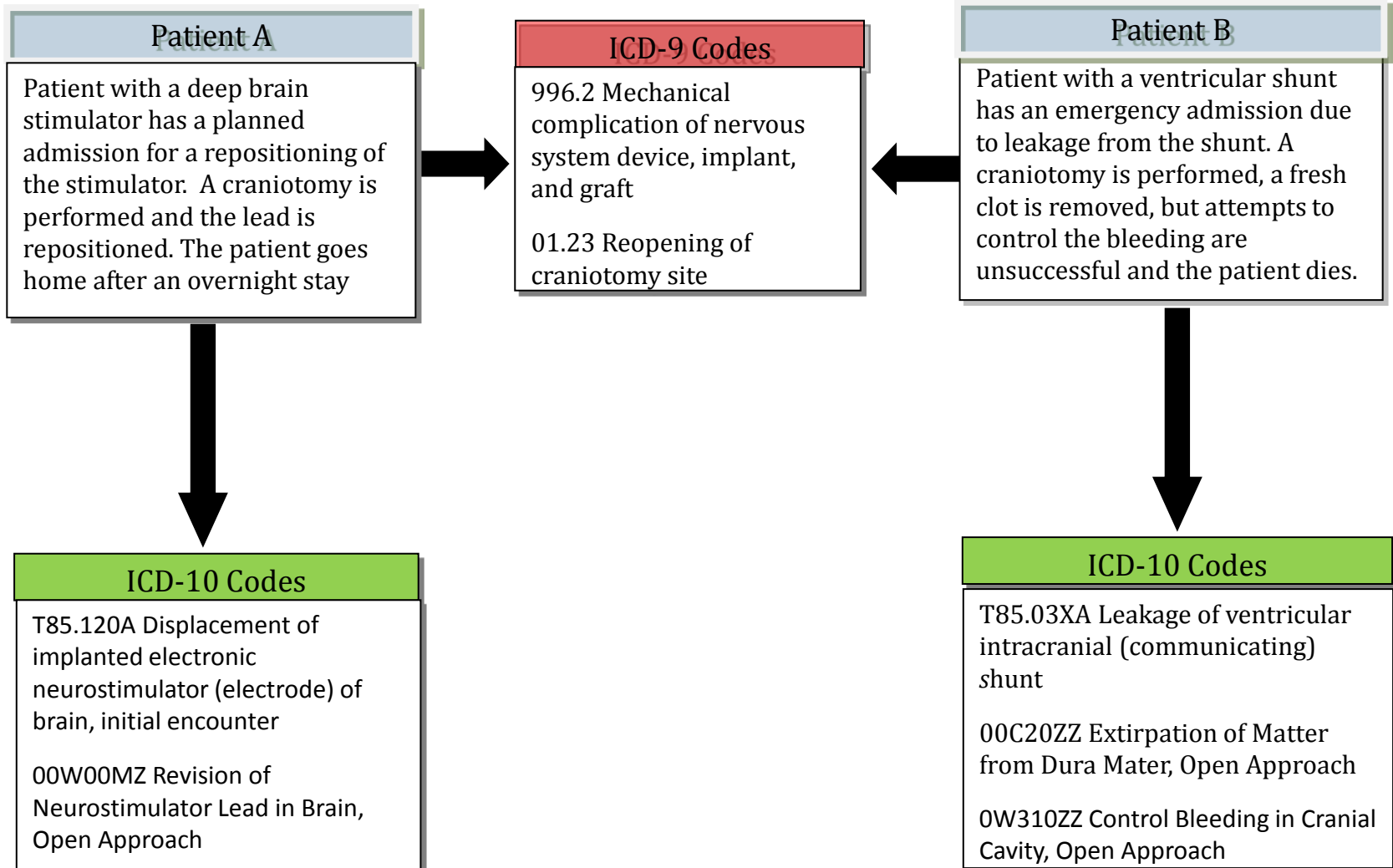


John S. Hughes, M.D.
Professor of Medicine, Yale University School of
Medicine; New Haven, CT

ICD-9 vs ICD-10 Case Example



ICD-9 and ICD-10 Coding Compared A Clinical Scenario

Due to a fall, a 74-year-old male presents with a complex puncture wound of the left leg that has transected the left femoral artery. The patient is taken to surgery where an open exploration of the wound is performed and the damaged portion of the femoral artery is replaced with synthetic graft. Post-op day 1, a slow leak in the anastomosis is found at the operative site. The patient is returned to the OR, the incision is reopened and the graft repaired at the site of the leak.

Diagnosis/ Procedure	ICD-9-CM	ICD-10-CM/ ICD-10-PCS	ICD-10-CM/ ICD-10-PCS Additional detail
<i>Complex puncture wound, left femoral artery</i>	904.0 Injury to common femoral artery	S75.022A Major laceration of femoral artery, left leg, initial encounter	--Type of injury specified (laceration) --Extent of laceration specified (major) --Left/ right specified (left) --Episode of care
<i>Left femoral artery synthetic graft replacement</i>	38.48 Resection of vessel with replacement, lower limb artery	04RL0JZ Replacement of Left Femoral Artery with Synthetic Substitute, Open Approach	--Type of vessel specified (artery) --Body site specified (femoral) Left/right specified (left) --Graft material specified (synthetic substitute) --Approach specified (open)

Diagnosis/ Procedure	ICD-9-CM	ICD-10-CM/ ICD-10-PCS	ICD-10-CM/ ICD-10-PCS Additional detail
<i>Graft anastomosis leak</i>	996.1 Mechanical Complication of other vascular device/implant/graft	T82.332A Leakage of femoral arterial graft (bypass), initial encounter	--Type of complication specified (leakage) --Body site specified (femoral artery) --Device specified (graft) --Episode of care
<i>Re-suture of anastomosis</i>	39.49 Revision of vascular procedure	04WY0JZ Revision of Synthetic Substitute in Lower Artery, Open Approach	--Revision defined, has one meaning --Device specified (synthetic substitute) --Body site specified (lower artery) --Approach specified (open)

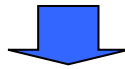
ICD-9-CM Mechanical Complication of Other Vascular Device, Implant and Graft:
one code (996.1)



ICD-10-CM Mechanical Complication of Other Vascular Grafts :
156 codes

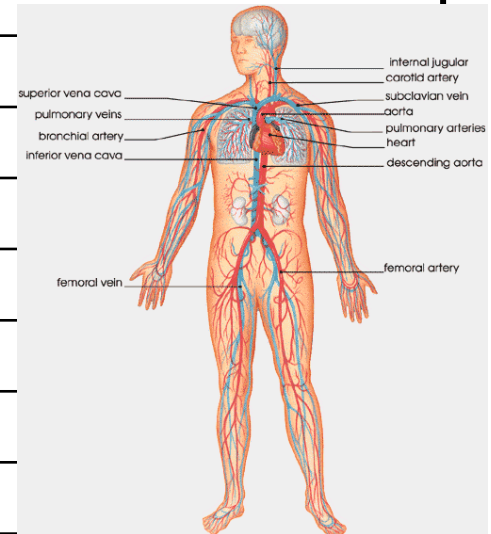
Type	Device	Episode of Care
Breakdown	Graft, Aorta	Initial encounter
Leakage	Graft, Carotid artery	Subsequent encounter
Displacement	Graft, Femoral artery	Sequela (late effect of injury)
Other (e.g., Obstruction)	Dialysis catheter	
	Arteriovenous fistula	
	Arteriovenous shunt	
	Counterpulsation balloon	
	Infusion catheter	
	Umbrella device	

ICD-9-CM Suture of an Artery: **single** code (3931)



ICD-10-PCS Repair of Artery: **603** codes

Approach	Body Part
0-Open	Abdominal Aorta
1-Open Intraluminal	Common Carotid Artery
2-Open Intraluminal Endoscopic	Radial Artery
3-Percutaneous	...
4-Percutaneous Endoscopic	...
5-Percutaneous Intraluminal	...
6-Percutaneous Intraluminal Endoscopic	...
C-Open With Temporary Shunt	...
9-Open with Cardiopulmonary Bypass	
B-Open with Inflow Occlusion	
	67 Different Arteries



Excessive and Burdensome?

- E8003 Railway accident involving collision with rolling stock and injuring pedal cyclist
- E8284 Accident involving animal being ridden injuring occupant of streetcar
- E8400 Accident to powered aircraft at takeoff or landing injuring occupant of spacecraft
- E9054 Centipede and venomous millipede (tropical) bite causing poisoning and toxic reactions
- E9093 Collapse of dam or man-made structure
- E9280 Accident due to prolonged stay in weightless environment
- E9557 Suicide and self-inflicted injury by paintball gun